

## Remote Proctoring with Proctorio Student Quick Start Guide

ATI is partnering with Proctorio to virtually proctor assessments. Proctorio is a remote proctoring platform that uses machine learning to remotely proctor students from wherever they might be. Proctorio offers a variety of secure exam settings including video, audio, and screen recording designed to maintain the integrity of the assessment and ensure uncompromised exam results.

### Technical requirements

A full list of ATI's technical requirements can be found at [atitesting.com/technical-requirements](https://atitesting.com/technical-requirements).

- Microphone: Any microphone, either internal or external
- Webcam: 320x240 VGA resolution (minimum) internal or external
- Desktop or laptop computer (no iPads, tablets or phones are to be used)

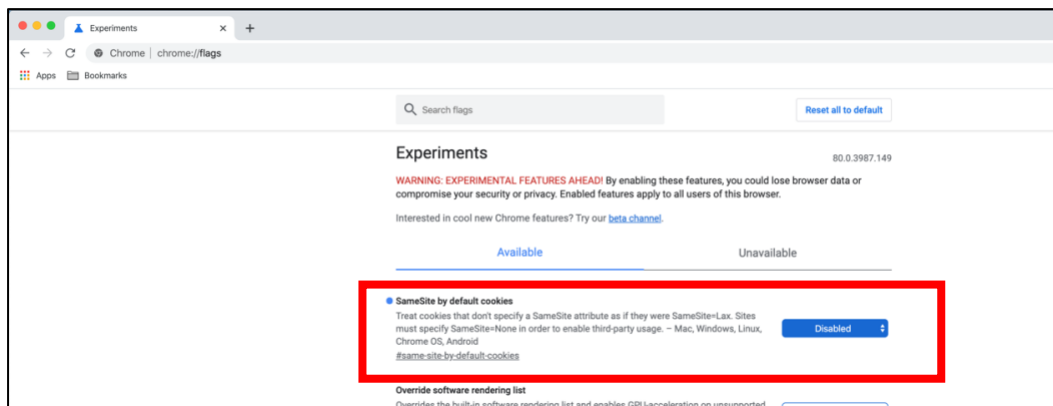
### Set yourself up for success

- Ensure you are using a fully charged laptop or desktop computer with a webcam and microphone.
- Install Google Chrome on your device. You **will not** be able to take the proctored assessment with any other browser.
- Have a school or government-issued ID card available.
- A well-lit, quiet space to take the assessment.
- Test security protocol allows for one piece of blank scratch paper to be used during an ATI Assessment. Please destroy the scratch paper upon completion of the assessment.

### Ready to take the assessment?

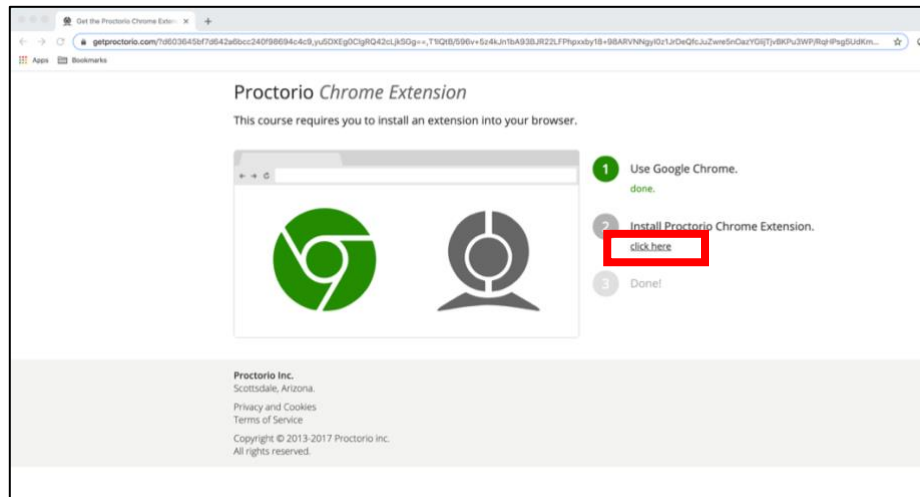
***It is essential that you read through the entirety of the following steps.***

**IMPORTANT:** Begin by opening Google Chrome. Navigate to `chrome://flags`. Enter "SameSite" in the search bar. Set the "SameSite default cookies" to DISABLED. Close out of Chrome windows.

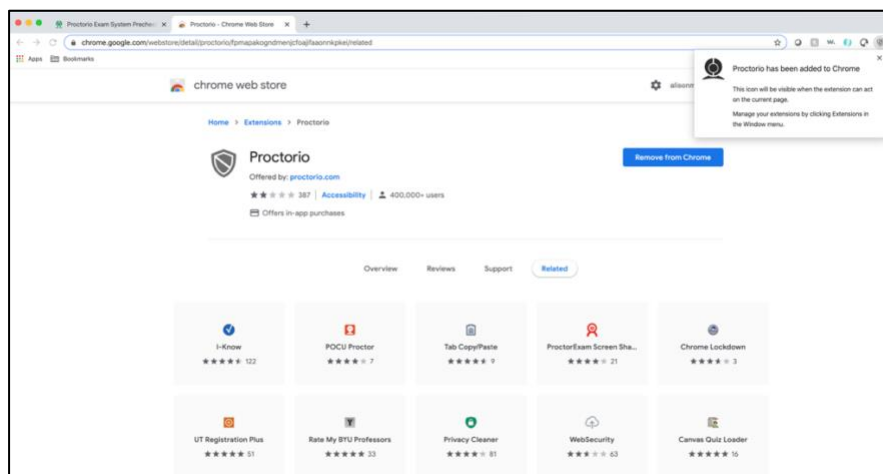


Log into your ATI student account: My ATI tab > Test tab. The available proctored assessment will show. Click *Begin*.

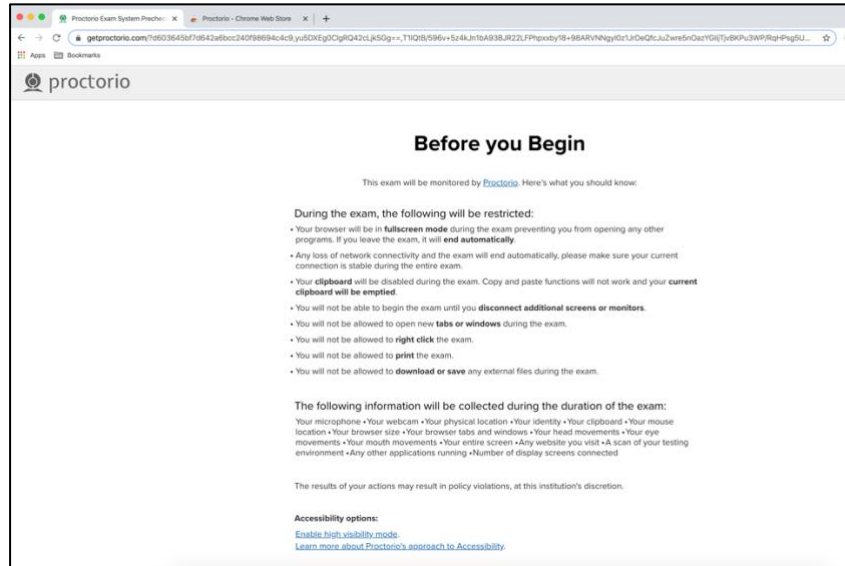
You will be sent to the getproctorio.com webpage. Here, you will be prompted to install the Proctorio Chrome Extension. You will only need to do this the first time you take a proctored assessment via Proctorio.



This will send you to the Proctorio page within the Chrome Web Store. Click *Add to Chrome* > *Add extension*

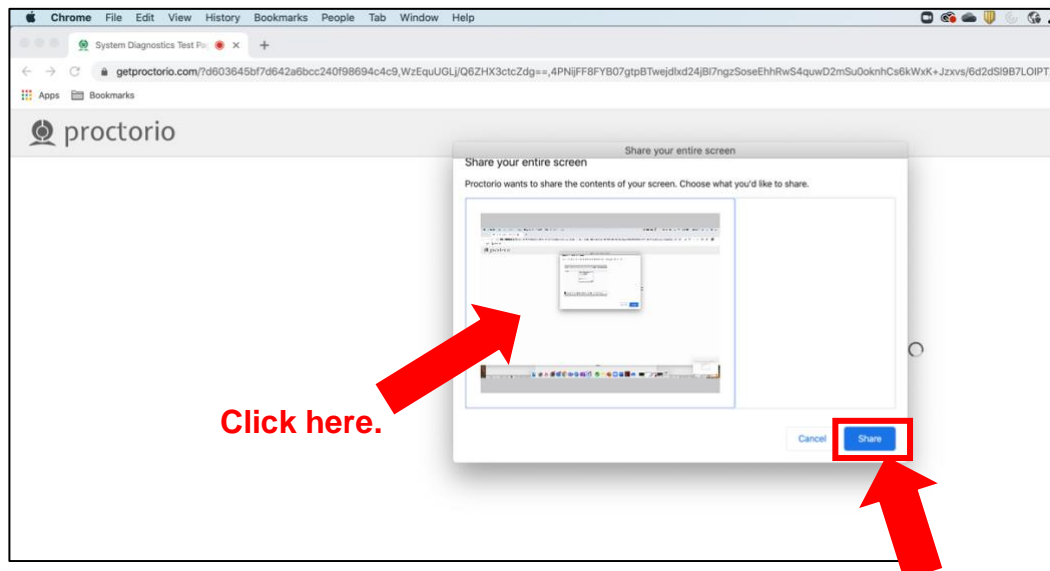


Once the extension is installed, navigate back to the getproctorio.com webpage. You will see a list of instructions, restrictions and data collected during the assessment.



At the bottom of the page click *Start exam pre-checks*. You will be prompted to allow Proctorio to access your camera, microphone and screen.

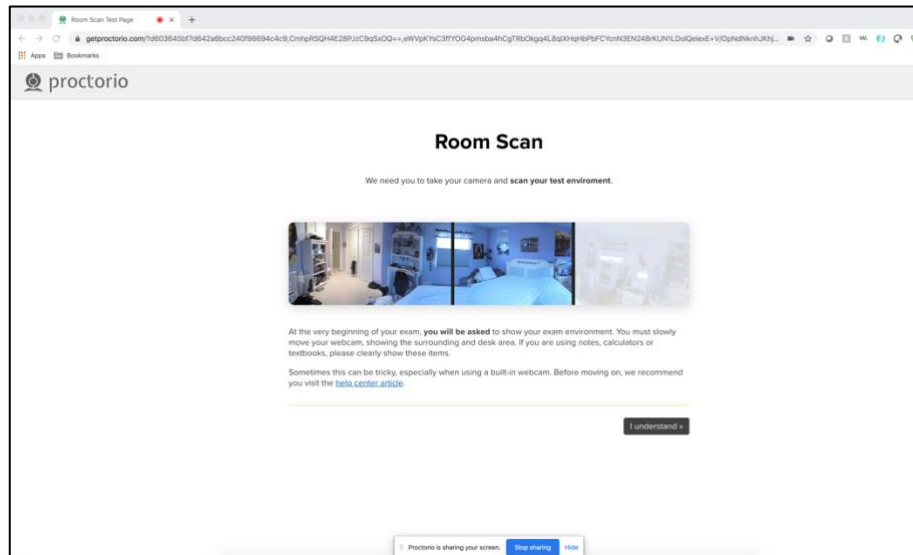
Next, you'll be prompted to allow screen share. **IMPORTANT:** You will have to click on the screen within the prompt, which will change the "Share" button to blue. Once the system has completed its checks click *Next* at the bottom of the screen.



You will be asked to show a photo ID to the camera. This is used to validate your identity. Click *Next*.

The site will then conduct a webcam image test. The system will take five photos to verify that your webcam is working correctly. Click *Begin camera test*. **IMPORTANT:** If the room is not bright enough or there a glare on the camera, you will not be permitted to move forward.

Next, you will be asked to show your exam environment by using your device's camera to scan the room you will be testing in. Click *I understand*.



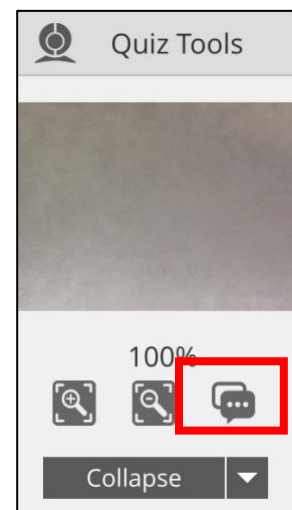
Finally, you'll be asked to sign the test taker agreement. Click *Start test*. *\*Tip: you may have to move the screen sharing banner bar at the bottom of the screen.*

Once your instructor approves your admission into the exam, the system will automatically launch your test.

### During the test

While taking your assessment, there will be a box labeled Quiz Tools available to you on the screen. With Quiz Tools, you can zoom in/out or if you experience any issues with the system you can begin a live chat with a Proctorio employee (notated by the red box). This will not connect you with your instructor.

Once you complete the assessment, your Proctorio session will end and your results will be available to your instructor and the student portal (if enabled by your institution).



### Technical support

If you experience issues when installing the Proctorio Chrome extension, please contact ATI Support at 1.800.667.7531. If you experience technical issues **during** your assessment, contact Proctorio directly via the chat option in the Quiz Tools window.